

(extend one hand forward, palm up)



(bring second palm forward, palm up)

(raise arms and form a circle above head)

(cup hands together and slowly raise them)

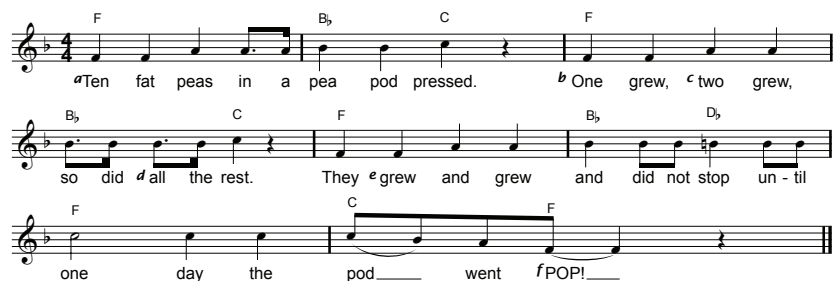
[illegible]

- a)** pretend to pick a tomato from a plant near the ground
- b)** pretend to place tomato in an imaginary wagon
- c)** pat knees in time with music



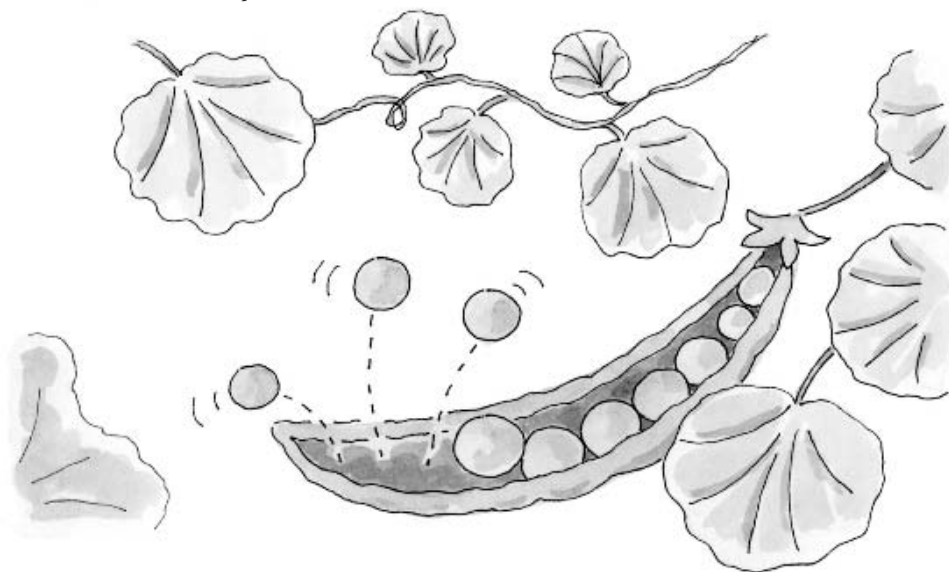
Ten Fat Peas

Sing to the tune of "Three Little Fishies (Itty Bitty Pool)"



Actions

- a) hold both fists together in front of chest
- b) hold up one finger
- c) hold up two fingers
- d) hold up all ten fingers
- e) turn hands so that palms face forward, then raise them above head
- f) clap hands once above head



Use with Theme 7, Week 1 **83**

In the Sky

Sing to the tune of "Mary Had a Little Lamb"



Actions

- a) raise arms and form a circle above head
- b) look and point upward

Additional Verses and Actions

Soon the day will turn to night,
(turn once in place)

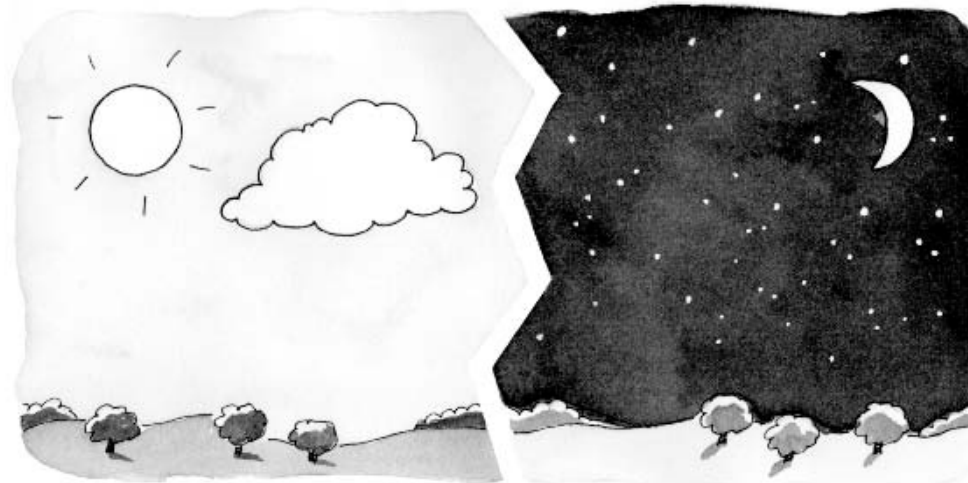
Turn to night, turn to night.
Soon the day will turn to night,
(turn once in place)

And I will curl up tight.
(press hands together, close eyes, and tilt head
against hands)

The stars are twinkling in the sky,
(hold hands up and wiggle fingers)

In the sky, in the sky.
The stars are twinkling in the sky.
(hold hands up and wiggle fingers)

I see them way up high.
(look and point upward)



84 Use with Theme 7, Week 2

It's Raining



It's raining, it's raining,
(move hands down while wiggling fingers)



Oh me, oh my!
(hold hands against cheeks)



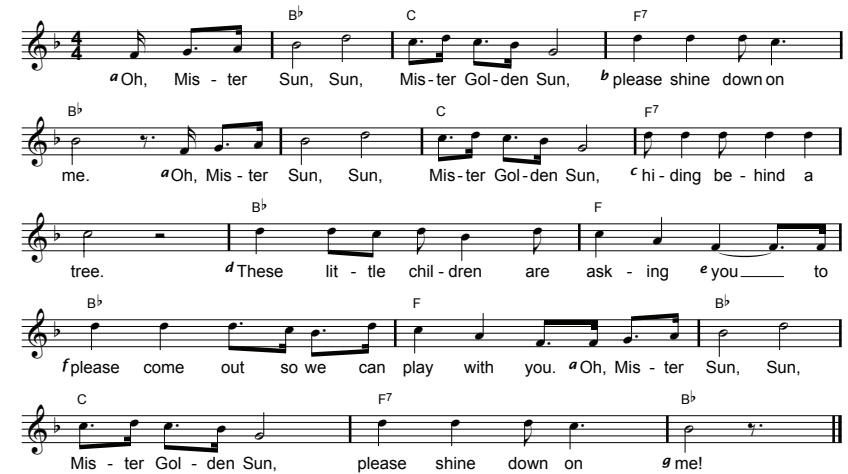
But our umbrellas
(bring hands up and then move them apart to outline an arc above head)



Will keep us dry!
(pretend to dust off hands)

Mister Sun

Traditional



Actions

- a) form a circle with hands by touching fingertips and thumbs
- b) "stand" pointer and big finger on palm of opposite hand
- c) hold up pointer and big finger and rest opposite palm on fingertips
- d) hold arms out at sides with palms facing forward
- e) point to sky
- f) make a "come here" motion with arm
- g) point to self

